

3.97" TFT LCD DISPLAY

Model: NL397016C0

Size: 3.97

Configuration: CTC + ILI9806

Resolution: 480 * 800

Perspective: 45 °

Operating temperature: -20 ~ 70 ° C

Storage temperature: -30 ~ 80 ° C

Backlight brightness: 300 cd / m2

PIN number: 24 PIN

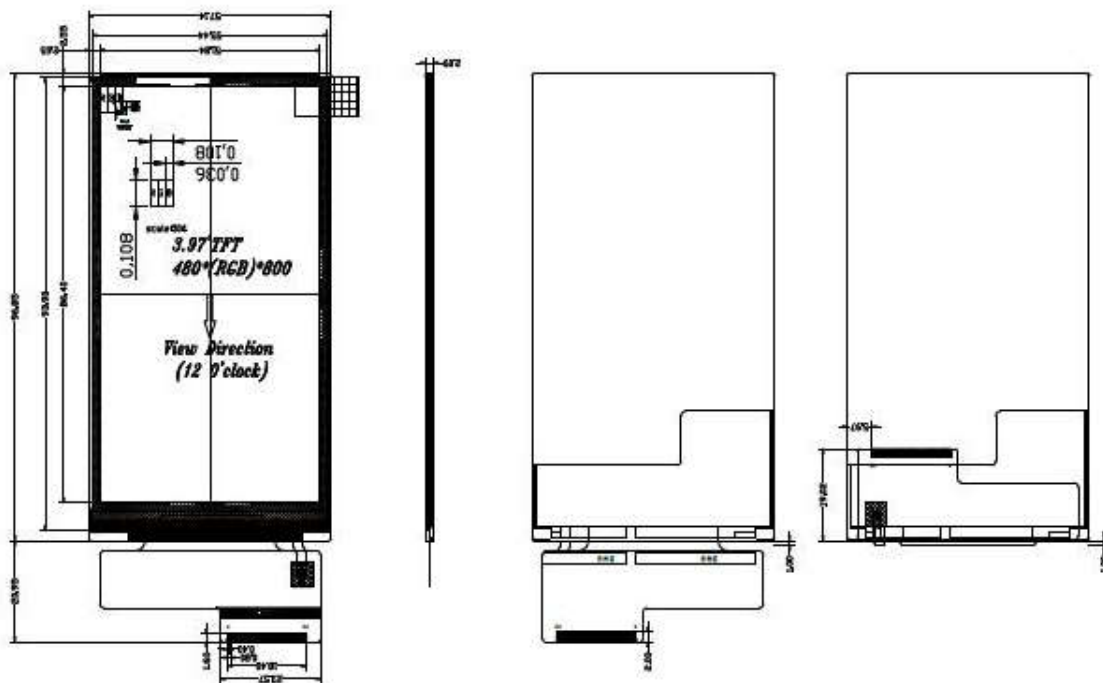
Interface: MIPI



Model :	TXW397016C0
Keywords Desc. :	3.97 inch 480*800 TFT LCD display, 24 pins MIPI 300 cd/m2
Product Class :	Graphic LCD Display
Product Tags :	Color TFT-LCD
Panel Type :	a-Si TFT-LCD
Panel Composition :	LCM
Panel Size :	4"
Resolution :	480×800
Aspect Ratio :	3:5 (W:H)
Form Factor :	Flat Rectangle Display
Orientation :	Portrait type
Active Area :	51.84 (W) × 86.4 (H) mm (A.A)
Outline Dimension :	57.14 (W) × 96.85 (H) mm
Max. Depth :	2.09 mm
LC Family :	TN
Polarizer :	Transmissive
Brightness :	300 (Typ.)
Contrast Ratio :	500:1 (Typ.)
Viewing Angle :	70/70/70/60 (L/R/U/D)
Viewing Direction :	12 o'clock

Colors Amount :	16.7M
Backlight Type :	WLED
Interface Type :	MIPI
Interface Pins :	24 Pins
Touch Panel :	Without
Operating Temp. :	-20 ~ 70 °C
Storage Temp. :	-30 ~ 80 °C

2. Mechanical Characteristics



1	GND
2	LEDA
3	LEDK
4	VC[2.8V
5	GND
6	FMARK
7	GND
8	CLK_N
9	CLK_P
10	GND
11	DATA0_N
12	DATA0_P
13	GND
14	GND
15	DATA1_N
16	DATA1_P
17	GND
18	GND
19	LCM_ID
20	RESET
21	GND
22	IDVCC1.8V
23	GND
24	GND

ES:
 DISPLAY TYPE:
 LCM ID: 3.97" TFT

Note: If you need the complete datasheet, please contact us.