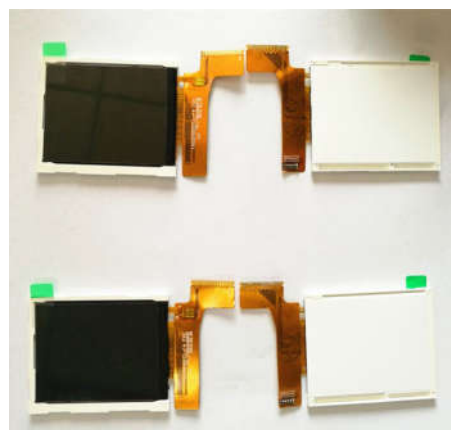


2.0" TFT LCD MODULE

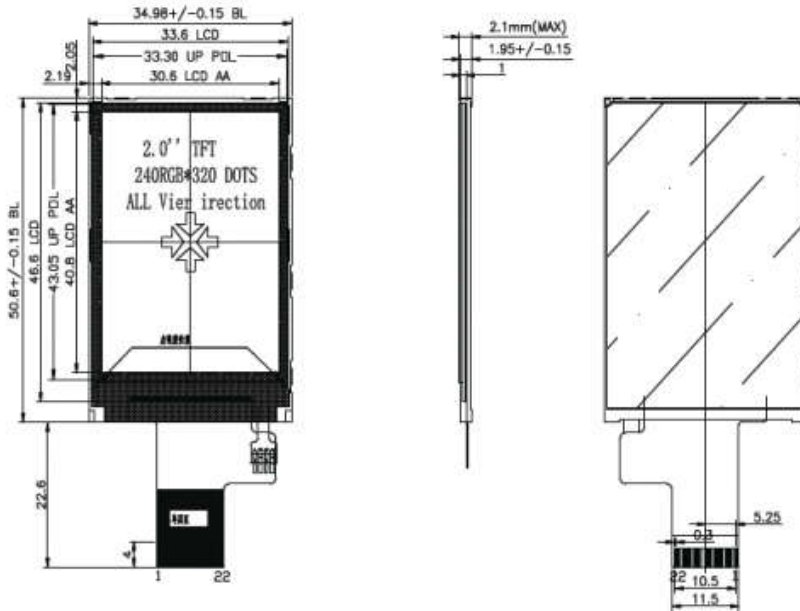
Model: NL200014S0
 Size: 2.0 inches
 Configuration: HSD + ST7789V
 Resolution: 240 * 320
 Perspective: IPS
 Operating temperature: -20 ~ 70 ° C
 Storage temperature: -30 ~ 80 ° C
 Backlight brightness: 400 CD / M2
 PIN number: 22 PIN
 Interface: MCU8 bit



Series :	2.0inch 240*320
Model :	NL200014S0
Keywords Desc. :	2.0inch 240 * 320 TFT LCD, 22 pin mcu 8 bit 400 cd/m2
Product Class :	Graphic LCD Display
Product Tags :	Color TFT-LCD
Panel Type :	a-Si TFT-LCD
Panel Composition :	LCM
Panel Size :	2.0"
Resolution :	240×320
Aspect Ratio :	3:4 (W:H)
Form Factor :	Flat Rectangle Display
Orientation :	Portrait type
Active Area :	30.6 (W) × 40.8 (H) mm (A.A)
Outline Dimension :	34.98 (W) × 50.6 (H) mm
Max. Depth :	2.1 mm
LC Family :	IPS Family
Polarizer :	Transmissive
Brightness :	400 (Typ.)
Contrast Ratio :	800:1 (Typ.)
Viewing Angle :	80/80/80/80 (L/R/U/D)

Viewing Direction :	Symmetry
Colors Amount :	262K
Backlight Type :	WLED
Interface Type :	CPU
Interface Pins :	22 Pins
Touch Panel :	Optional
Operating Temp. :	-20 ~ 70 °C
Storage Temp. :	-30 ~ 80 °C

2. Mechanical Characteristics



PIN	SYMBOL
1	A
2	K
3	NC
4	NC
5	NC
6	VCC
7	D7
8	D6
9	D5
10	D4
11	D3
12	D2
13	D1
14	D0
15	RD
16	MR
17	RS
18	CS
19	TE
20	RESET
21	GND
22	GND

Note: If you need the complete datasheet, please contact us.