

# 1.77" TFT LCD MODULE

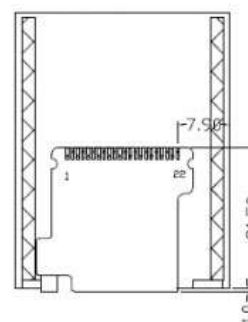
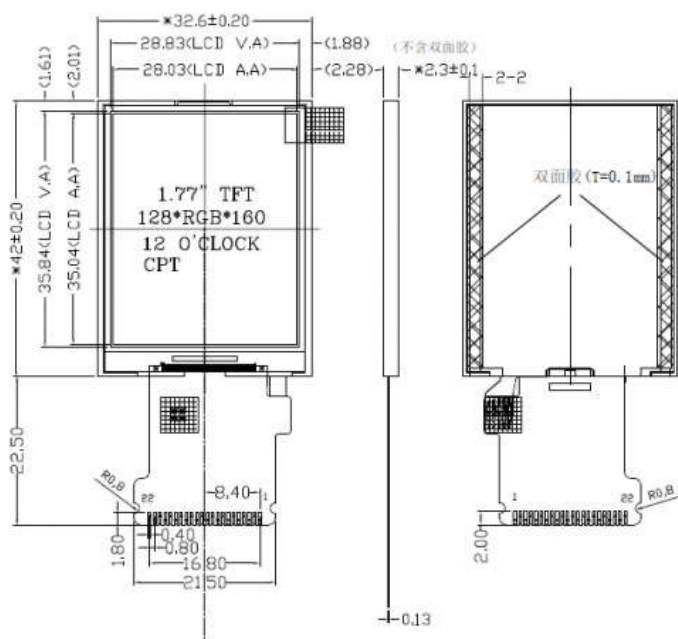
Model: NL180014P1, Size: 1.77 inches, Resolution: 128 \* 160, Perspective: 45°, Operating temperature: -20 ~ 70 ° C, Storage temperature: -30 ~ 80 ° C, Backlight brightness: 250 CD / M2, PIN number: 22PIN, Interface: mcu 8 bit



Series :	1.77 inch
Model :	NL180014P1
Keywords Desc. :	1.77 inch 128*160 TFT LCD display, 22pins mcu 8 bit 300cd/m <sup>2</sup>
Product Class :	Graphic LCD Display
Product Tags :	Color TFT-LCD Wide Temperature LCD
Panel Type :	a-Si TFT-LCD
Panel Composition :	LCM
Panel Size :	1.8"
Resolution :	128×160
Aspect Ratio :	4:5 (W:H)
Form Factor :	Flat Rectangle Display
Orientation :	Portrait type
Active Area :	28.03 (W) × 35.04 (H) mm (A.A)
Outline Dimension :	32.6 (W) × 42 (H) mm
Max. Depth :	2.3 mm
LC Family :	TN

Polarizer :	Transmissive
Brightness :	300 (Typ.)
Contrast Ratio :	300:1 (Typ.)
Viewing Angle :	45/45/45/20 (L/R/U/D)
Viewing Direction :	12 o'clock
Colors Amount :	262K
Backlight Type :	WLED
Interface Type :	CPU
Interface Pins :	22 Pins
Touch Panel :	Without
Operating Temp. :	-20 ~ 70 °C
Storage Temp. :	-30 ~ 80 °C

## 2. Mechanical Characteristics



FPC弯折示意图  
(展开出货)

PIN	DESCRIPTION
1	BL_K
2	BL_A
3	GND
4	VDD
5	IOVCC
6	/CS
7	/RSTB
8	RS/SCL
9	WRB
10	RDB
11	DB7
12	DB6
13	DB5
14	DB4
15	DB3
16	DB2
17	DB1
18	DB0/SDA
19	IM2
20	SPI4W
21	NC
22	NC

IM2='1', Parallel Interface  
 IM2='0', Serial Interface  
 SPI4W='0', 3-line SPI Enable.  
 SPI4W='1', 4-line SPI Enable.

Note: If you need the complete datasheet, please contact us.